



pivot

SPRING 2025 | RELEVÉ

STYRA GOLDBLATT | TXA 355C | SPRING 2025



pivot



pivot

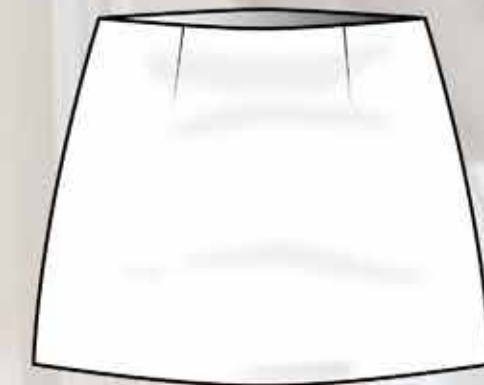
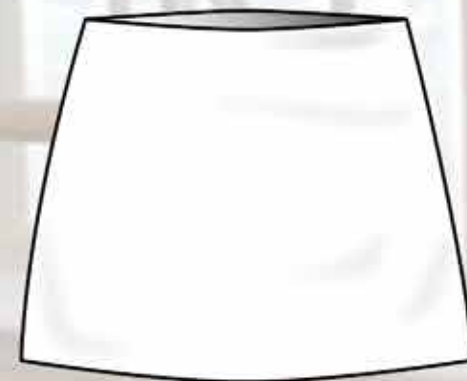
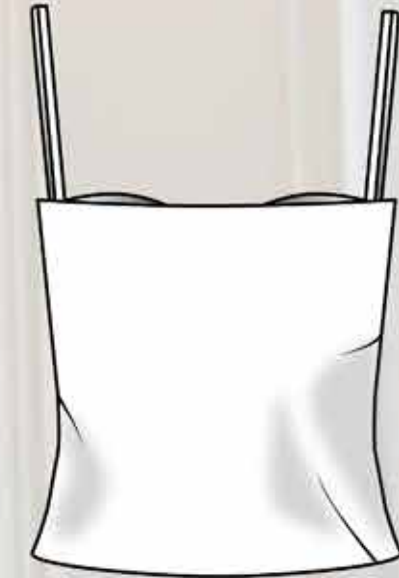
The Pivot woman is one of intention and quiet strength. She is drawn to a style that echoes a dancer: practical, poised, and invites motion into everyday life. Pivot designs its garments with movement and form in mind. Each piece in the Relevé collection embodies effortless sophistication and modern femininity. This is achieved through a soft color palette of neutrals and pastels along with the use of lightweight textiles.

Relevé, inspired by the strength and gracefulness of ballet dancers, has an intention of making its wearers feel unstoppable. A celebration of rise and rhythm, Relevé captures the strength behind the softness and power held in every pirouette, every plié, and every breath between. Pivot was created as a tribute to the dancer within every woman.

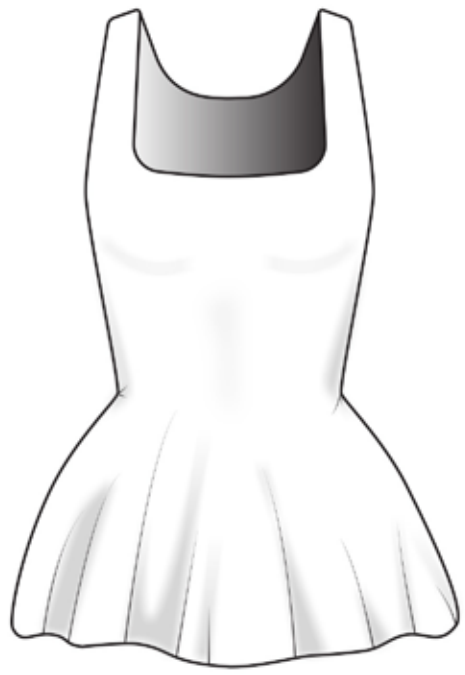




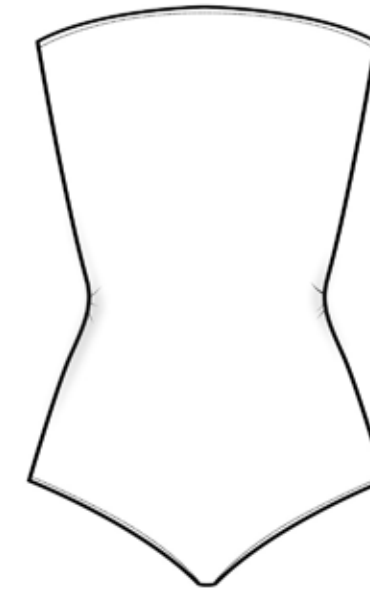
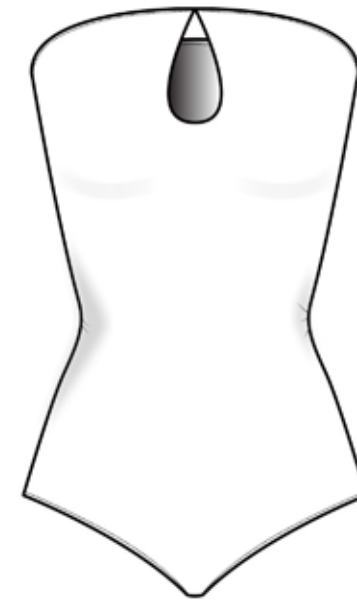
pivot







Glissade Dress
 Style #SG121
 Lycra, Crepe
 Wholesale: \$60
 Retail: \$120



Prima Leotard
 Style #SG123
 Nylon, Lycra
 Wholesale: \$60
 Retail: \$120



*Demi Pointe
 Jumpsuit*
 Style #SG122
 Nylon, Lycra
 Wholesale: \$80
 Retail: \$190



Élan Tank
 Style #SG124
 Nylon, Lycra,
 Chiffon
 Wholesale: \$40
 Retail: \$80



pivot



Adagio Tee
 Style #SG125
 Nylon, Lycra
 Wholesale: \$80
 Retail: \$190



pivot

Tendu Pants
Style #SG128
Nylon, Lycra,
Chiffon
Wholesale: \$60
Retail: \$120



Arabesque Skirt
Style #SG130
Crepe, Lycra
Wholesale: \$80
Retail: \$160



Jeté Shorts
Style #SG129
Lycra, Crepe
Wholesale: \$50
Retail: \$100

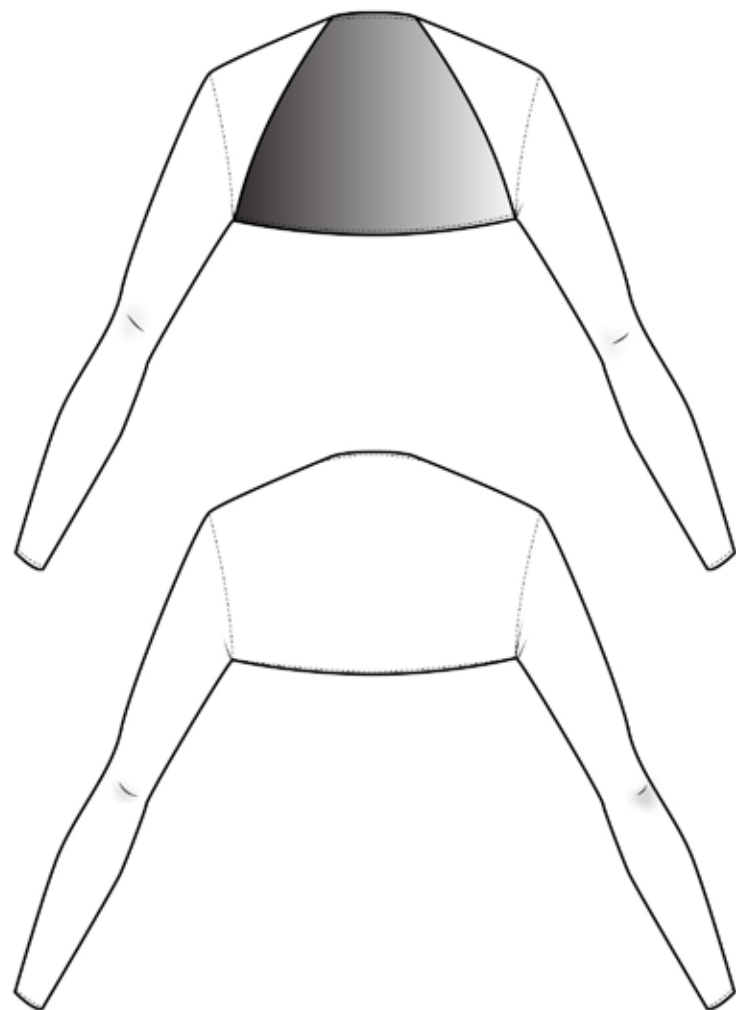
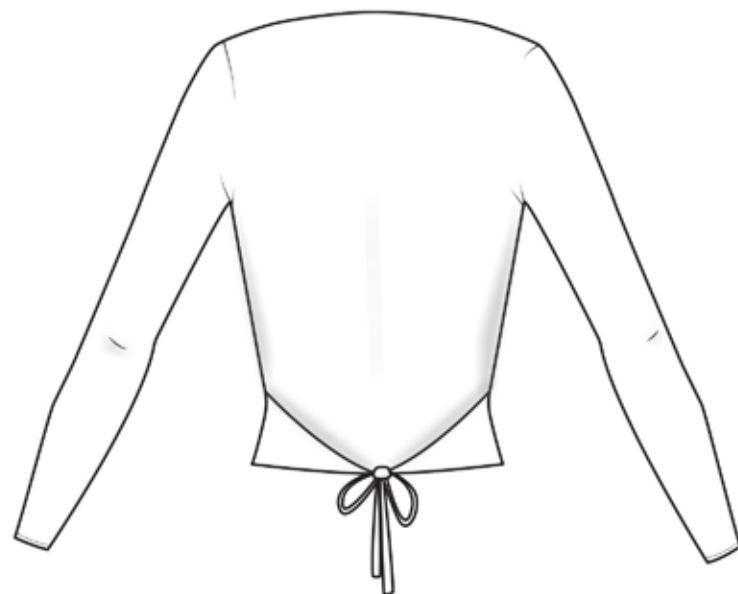


Chassé Skirt
Style #SG131
Chiffon
Wholesale: \$50
Retail: \$100

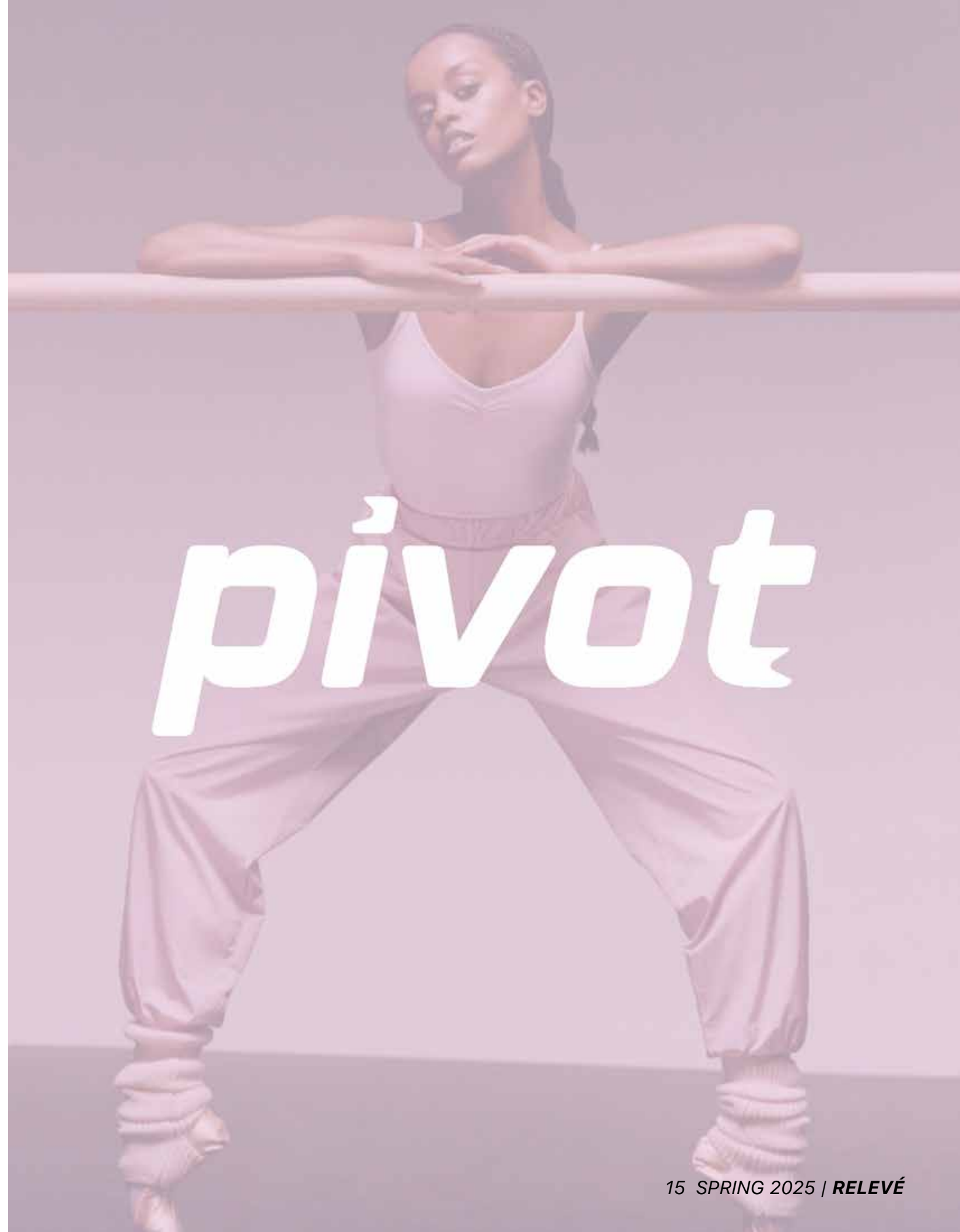


pivot

Coda Wrap
Style #SG126
Poplin
Wholesale: \$60
Retail: \$120



Allongé Shrug
Style #SG127
Nylon, Lycra
Wholesale: \$45
Retail: \$90





pivot

SPRING 2025 | RELEVÉ

WWW.PIVOT.COM